

# [ 2 - BEDROOM ]



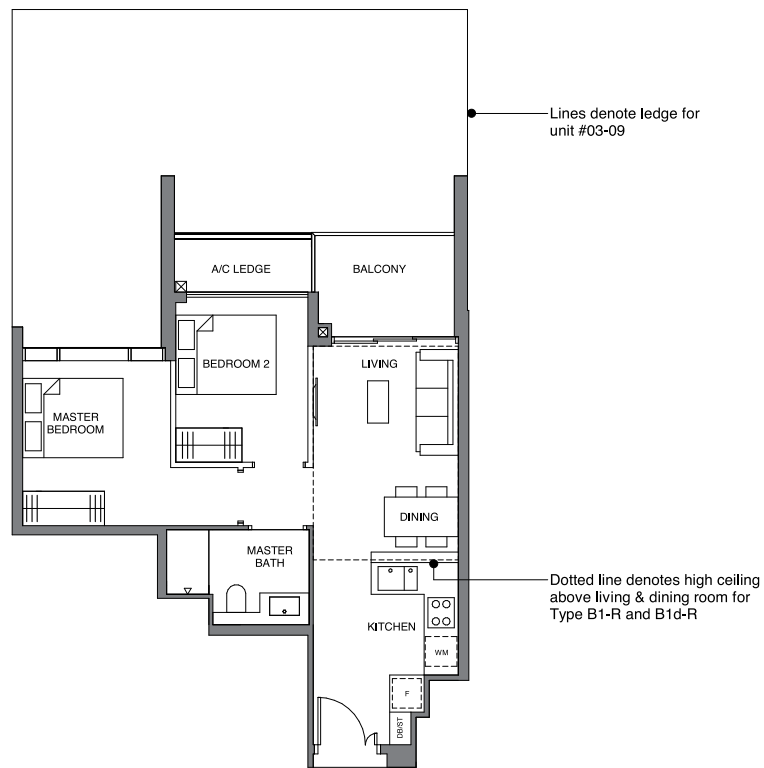
**TYPE B1**  
57 sqm | 614 sq ft

**BLOCK 28**  
#03-09 to #11-09

**TYPE B1-R**  
70 sqm | 753 sq ft

Incl. of 13 sq m | 140 sq ft of void area  
(high ceiling) above living & dining

**BLOCK 28**  
#12-09

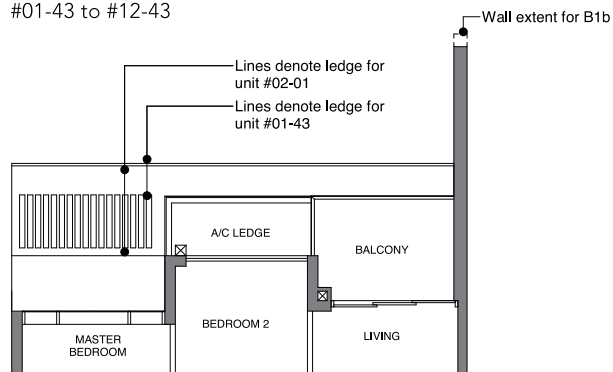


**TYPE B1a**  
57 sqm | 614 sq ft

**BLOCK 26**  
#02-01 to #12-01

**TYPE B1b**  
57 sqm | 614 sq ft

**BLOCK 36**  
#01-43 to #12-43



**TYPE B1c**  
57 sqm | 614sq ft

**BLOCK 38**  
#01-51 to #12-51

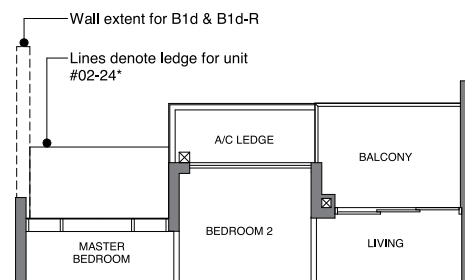
**TYPE B1d**  
57 sqm | 614 sq ft

**BLOCK 30**  
#02-24\* to #11-24\*

**TYPE B1d-R**  
70 sqm | 753 sq ft

Incl. of 13 sq m | 140 sq ft of void area  
(high ceiling) above living & dining

**BLOCK 30**  
#12-24\*



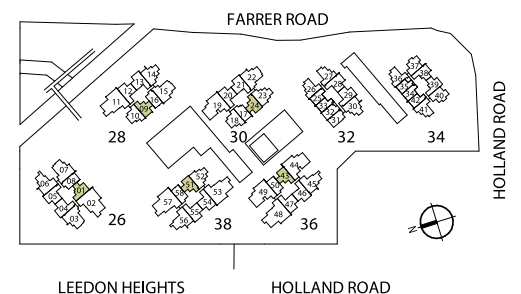
DB/ST: Distribution Board / Storage

F: Fridge

WM: Washer Cum Dryer

\* Denotes mirror image

Area includes PES, A/C ledge, balcony and void area (high ceiling). The plans are subject to change as may be required or approved by the relevant authorities. Areas are approximate measurements only and are subject to final survey. Plans are not drawn to scale and do not form part of the contract.



# [ 2 - BEDROOM ]

**TYPE B2**  
62 sqm | 667 sq ft

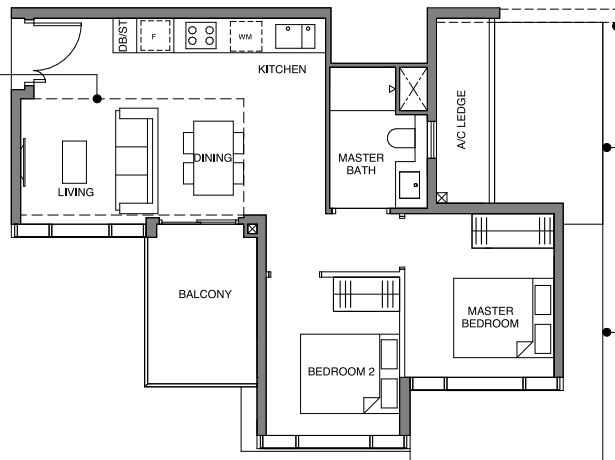
**BLOCK 34**  
#04-40 to #11-40

Dotted line denotes high ceiling above living & dining room for Type B2-R and B2a-R

**TYPE B2-R**  
73 sqm | 786 sq ft

Incl. of 11 sq m | 118 sq ft of void area (high ceiling) above living & dining

**BLOCK 34**  
#12-40



**TYPE B2a**  
62 sqm | 667 sq ft

**BLOCK 34**  
#04-37\* to #11-37\*

**TYPE B2a-R**  
73 sqm | 786 sq ft

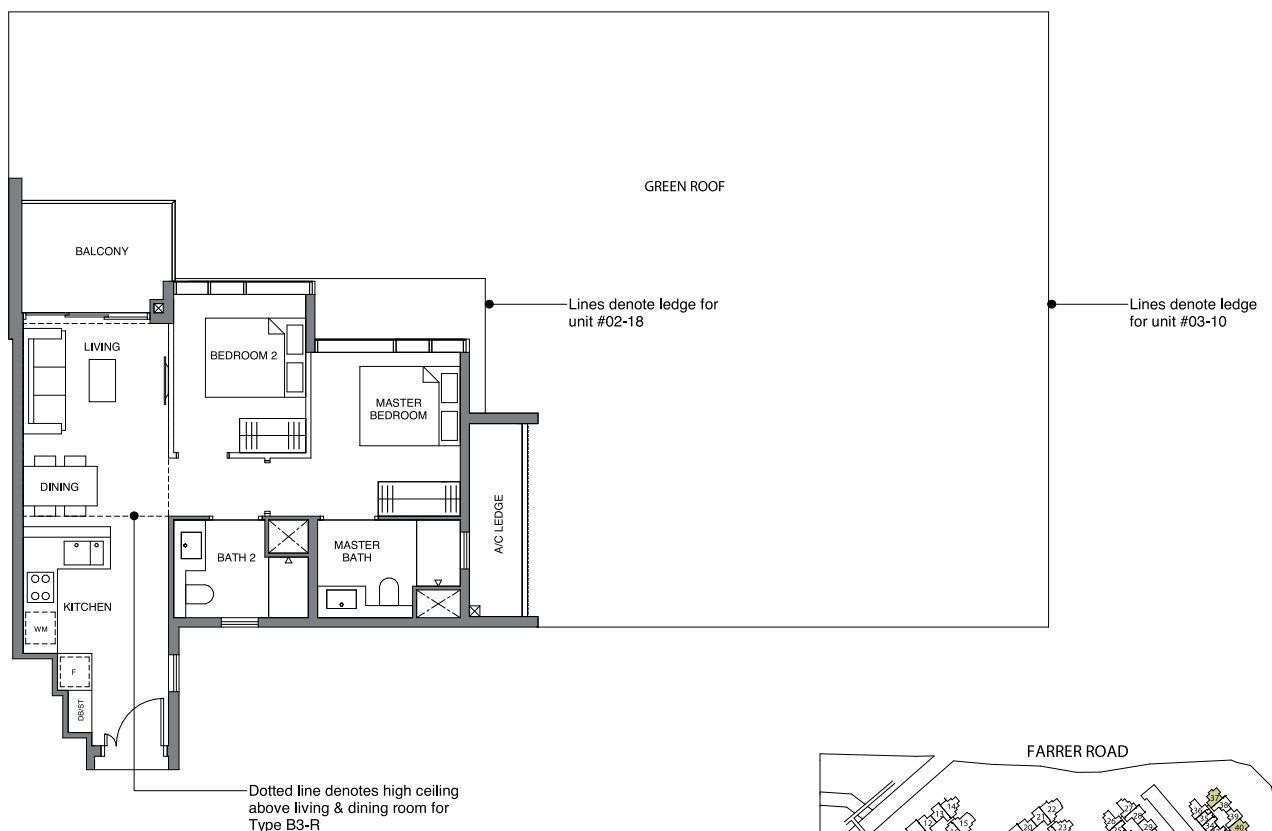
Incl. of 11 sq m | 118 sq ft of void area (high ceiling) above living & dining

**BLOCK 34**  
#12-37\*

**TYPE B3**  
65 sqm | 700 sq ft

**BLOCK 28**  
#03-10 to #11-10

**BLOCK 30**  
#02-18 to #11-18



**TYPE B3-R**  
76 sqm | 818 sq ft

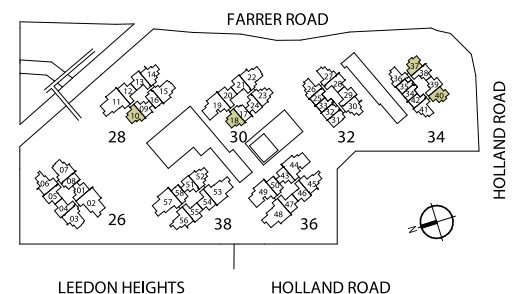
Incl. of 11 sq m | 118 sq ft of void area (high ceiling) above living and dining

**BLOCK 28**  
#12-10

**BLOCK 30**  
#12-18

DB/ST: Distribution Board / Storage  
F: Fridge  
WM: Washer Cum Dryer  
\* Denotes mirror image

Area includes PES, A/C ledge, balcony and void area (high ceiling). The plans are subject to change as may be required or approved by the relevant authorities. Areas are approximate measurements only and are subject to final survey. Plans are not drawn to scale and do not form part of the contract.



# [ 2 - BEDROOM ]



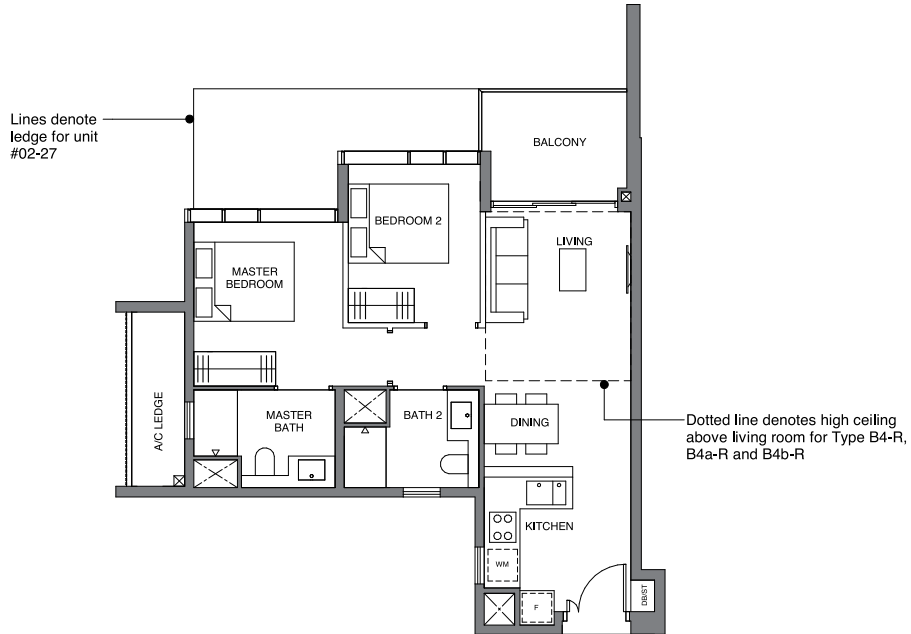
**TYPE B4**  
65 sqm | 700 sq ft

**BLOCK 32**  
#02-27 to #11-27

**TYPE B4-R**  
75 sqm | 807 sq ft

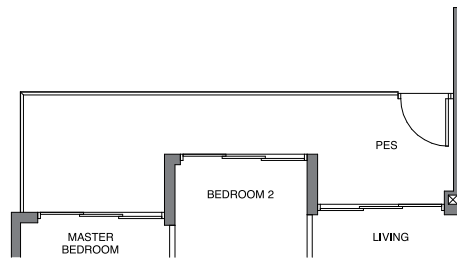
Incl. of 10 sq m | 108 sq ft of void area  
(high ceiling) above living

**BLOCK 32**  
#12-27



**TYPE B4-P**  
74 sqm | 797 sq ft

**BLOCK 32**  
#01-27



**TYPE B4a**  
65 sqm | 700 sq ft

**BLOCK 32**  
#02-26\* to #11-26\*

**BLOCK 34**  
#04-41 to #11-41

**TYPE B4a-R**  
75 sqm | 807 sq ft

Incl. of 10 sq m | 108 sq ft of void area  
(high ceiling) above living

**BLOCK 32**  
#12-26\*

**BLOCK 34**  
#12-41

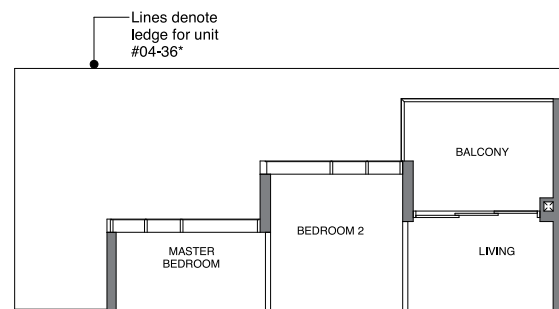
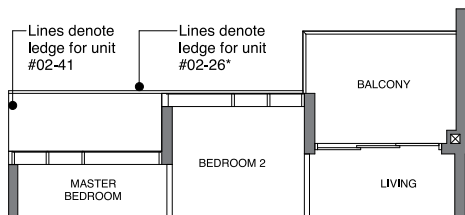
**TYPE B4b**  
65 sqm | 700 sq ft

**BLOCK 34**  
#04-36\* to #11-36\*

**TYPE B4b-R**  
75 sqm | 807 sq ft

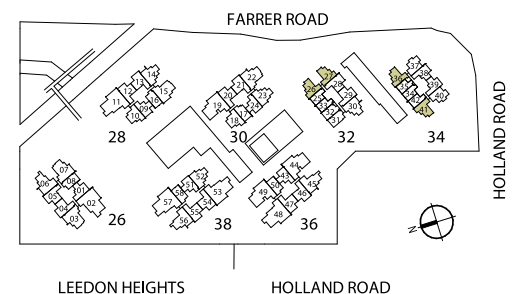
Incl. of 10 sq m | 108 sq ft of void area  
(high ceiling) above living

**BLOCK 34**  
#12-36\*



DB/ST: Distribution Board / Storage  
F: Fridge  
WM: Washer Cum Dryer  
\* Denotes mirror image

Area includes PES, A/C ledge, balcony and void area (high ceiling). The plans are subject to change as may be required or approved by the relevant authorities. Areas are approximate measurements only and are subject to final survey. Plans are not drawn to scale and do not form part of the contract.



# [ 2 - BEDROOM ]

**TYPE B5**  
66 sqm | 710 sq ft

**BLOCK 26**  
#03-04\* to #12-04\*  
#03-05 to #12-05

**BLOCK 28**  
#02-13 to #11-13

**BLOCK 30**  
#02-21 to #11-21

**BLOCK 32**  
#02-29 to #11-29

**BLOCK 36**  
#02-47 to #12-47

**BLOCK 38**  
#02-55 to #12-55

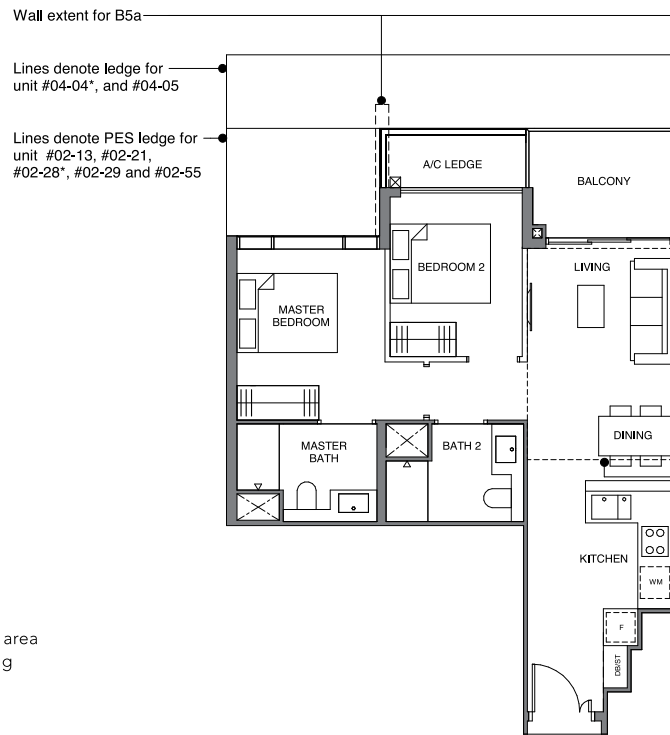
**TYPE B5-R**  
78 sqm | 840 sq ft

Incl. of 12 sq m | 129 sq ft of void area  
(high ceiling) above living & dining

**BLOCK 28**  
#12-13

**BLOCK 30**  
#12-21

**BLOCK 32**  
#12-29



**TYPE B5a**  
66 sqm | 710 sq ft

**BLOCK 32**  
#02-28\* to #11-28\*

**TYPE B5a-R**  
78 sqm | 840 sq ft

Incl. of 12 sq m | 129 sq ft of void area  
(high ceiling) above living & dining

**BLOCK 32**  
#12-28\*

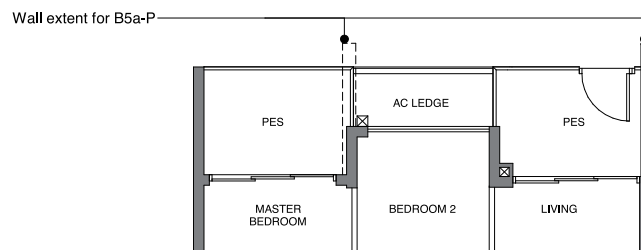
Dotted line denotes high ceiling  
above living & dining room for  
Type B5-R and B5a-R

**TYPE B5-P**  
72 sqm | 775 sq ft

**BLOCK 30**  
#01-21

**BLOCK 32**  
#01-29

**BLOCK 38**  
#01-55

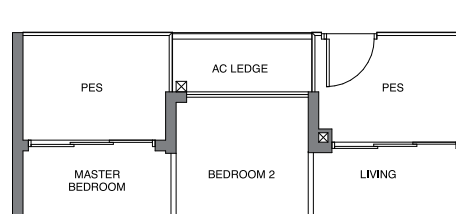


**TYPE B5a-P**  
72 sqm | 775 sq ft

**BLOCK 32**  
#01-28\*

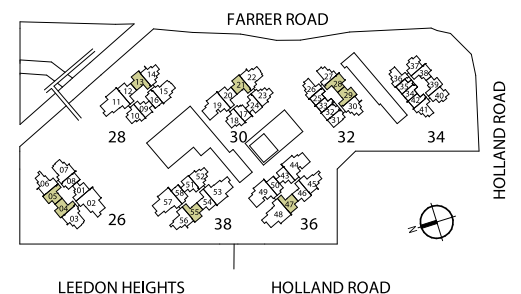
**TYPE B5-P**  
72 sqm | 775 sq ft

**BLOCK 28**  
#01-13



DB/ST: Distribution Board / Storage  
F: Fridge  
WM: Washer Cum Dryer  
\* Denotes mirror image

Area includes PES, A/C ledge, balcony and void area (high ceiling). The plans are subject to change as may be required or approved by the relevant authorities. Areas are approximate measurements only and are subject to final survey. Plans are not drawn to scale and do not form part of the contract.



# [ 2 - BEDROOM ]



**TYPE B5b**  
66 sqm | 710 sq ft

**BLOCK 28**  
#02-12 to #11-12

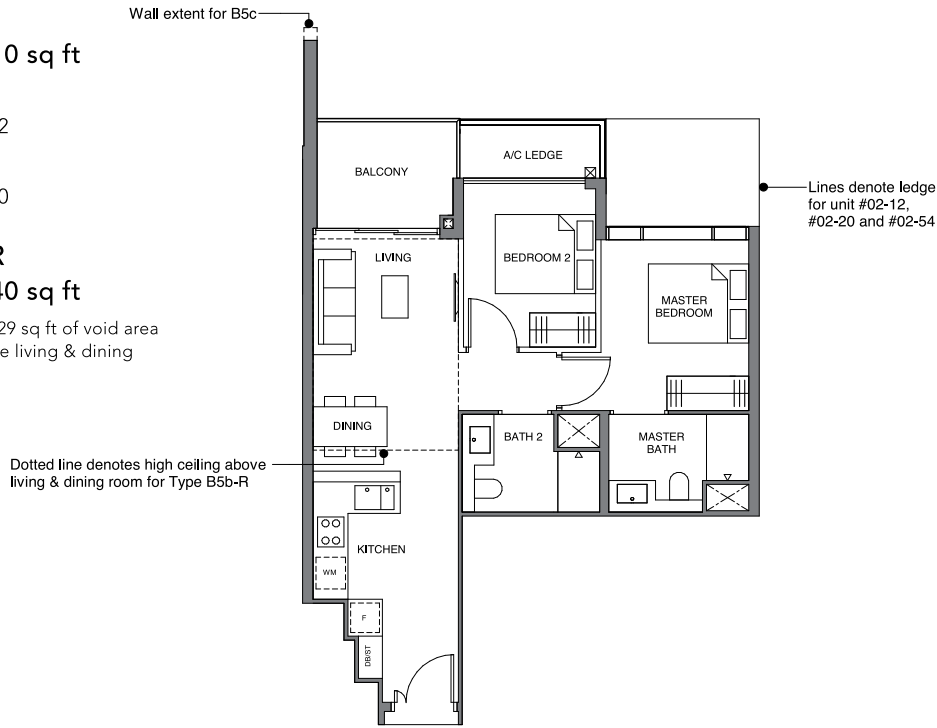
**BLOCK 30**  
#02-20 to #11-20

**TYPE B5b-R**  
78 sqm | 840 sq ft

Incl. of 12 sq m | 129 sq ft of void area  
(high ceiling) above living & dining

**BLOCK 28**  
#12-12

**BLOCK 30**  
#12-20



**TYPE B5c**  
66 sqm | 710 sq ft

**BLOCK 36**  
#02-46 to #12-46

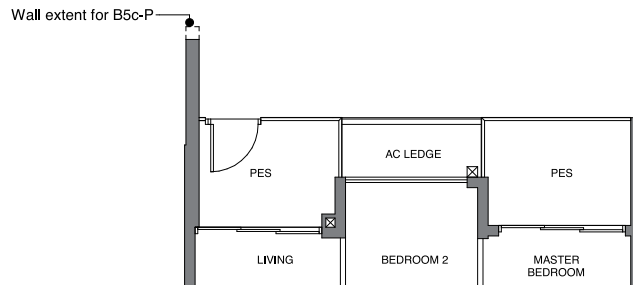
**BLOCK 38**  
#02-54 to #12-54

**TYPE B5b-P**  
72 sqm | 775 sq ft

**BLOCK 30**  
#01-20

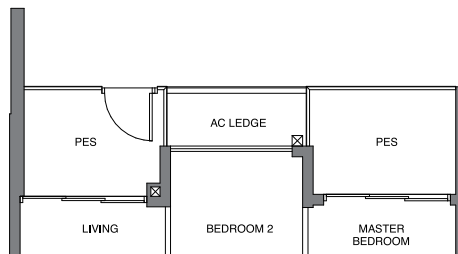
**TYPE B5c-P**  
72 sqm | 775 sq ft

**BLOCK 38**  
#01-54



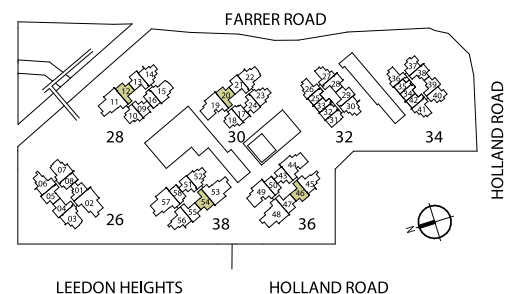
**TYPE B5b-P**  
72 sqm | 775 sq ft

**BLOCK 28**  
#01-12



DB/ST: Distribution Board / Storage  
F: Fridge  
WM: Washer Cum Dryer  
\* Denotes mirror image

Area includes PES, A/C ledge, balcony and void area (high ceiling). The plans are subject to change as may be required or approved by the relevant authorities. Areas are approximate measurements only and are subject to final survey. Plans are not drawn to scale and do not form part of the contract.



# [ 2 - BEDROOM + STUDY ]

**TYPE BS1**  
76 sqm | 818 sq ft

**BLOCK 30**  
#02-23\* to #11-23\*

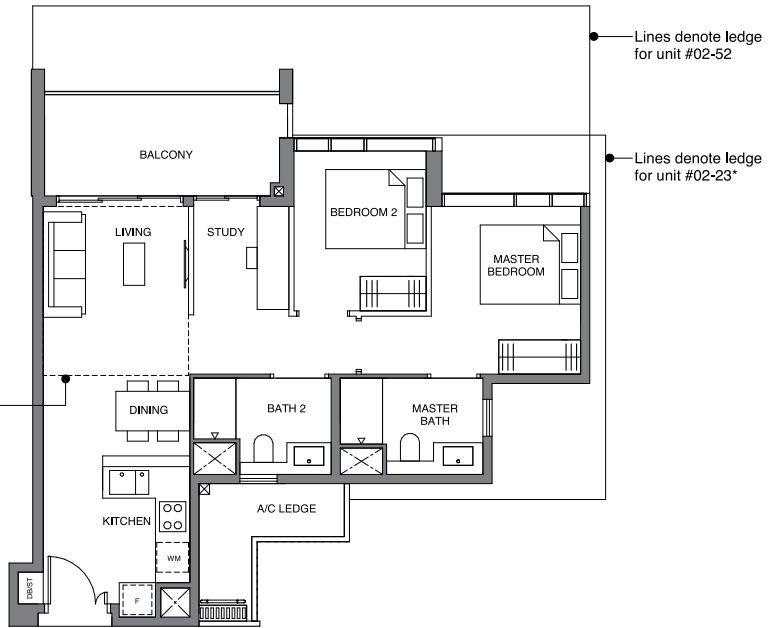
**BLOCK 38**  
#02-52 to #12-52

**TYPE BS1-R**  
86 sqm | 926 sq ft

Incl. of 10 sq m | 108 sq ft of void area  
(high ceiling) above living

**BLOCK 30**  
#12-23\*

Dotted line denotes high ceiling above living room for Type BS1-R and BS1a-R



**TYPE BS1a**  
76 sqm | 818 sq ft

**BLOCK 28**  
#02-14 to #11-14

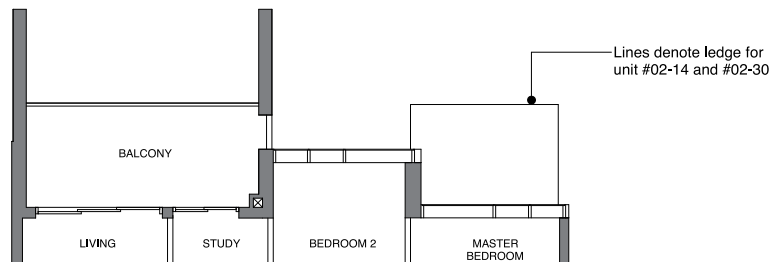
**BLOCK 32**  
#02-30 to #11-30

**TYPE BS1a-R**  
86 sqm | 926 sq ft

Incl. of 10 sq m | 108 sq ft of void area  
(high ceiling) above living

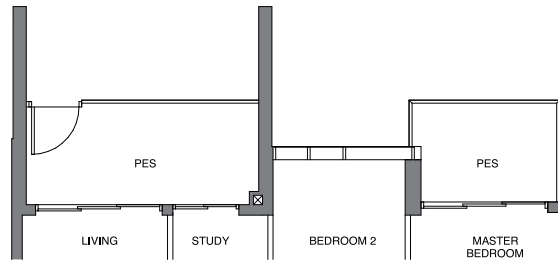
**BLOCK 28** #12-14

**BLOCK 32** #12-30



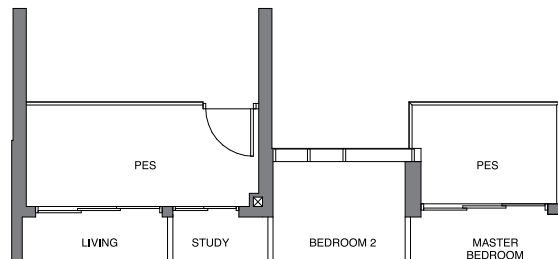
**TYPE BS1a-P**  
81 sqm | 872 sq ft

**BLOCK 28**  
#01-14



**TYPE BS1a-P**  
81 sqm | 872 sq ft

**BLOCK 32**  
#01-30



DB/ST: Distribution Board / Storage  
F: Fridge  
WM: Washer Cum Dryer  
\* Denotes mirror image

Area includes PES, A/C ledge, balcony and void area (high ceiling). The plans are subject to change as may be required or approved by the relevant authorities. Areas are approximate measurements only and are subject to final survey. Plans are not drawn to scale and do not form part of the contract.

